

# RELEASE NOTES

## **Trimble GPS Analyst™ extension Update for ArcPad 7.1 software support**

- Introduction
- Enhancements provided in the update
- Issues resolved by this update
- Installing the update
- Working with AXF files and the Trimble GPS Analyst extension

Version 2.10  
Revision A  
November 2007



Trimble Navigation Limited  
10355 Westmoor Drive  
Suite #100  
Westminster, CO 80021  
USA  
[www.trimble.com](http://www.trimble.com)

### **Legal Notices**

For a complete list of all relevant legal notices regarding this product, please refer to the *Trimble GPS Analyst Extension Getting Started Guide*.

### **Copyright and Trademarks**

© 2004 – 2007, Trimble Navigation Limited. All rights reserved. For STL support, the software uses the Moscow Center for SPARC Technology adaptation of the SGI Standard Template Library. Copyright © 1994 Hewlett-Packard Company, Copyright © 1996, 97 Silicon Graphics Computer Systems, Inc., Copyright © 1997 Moscow Center for SPARC Technology.

Trimble and the Globe & Triangle logo are trademarks of Trimble Navigation Limited, registered in the United States and in other countries. GPS Analyst and GPSCorrect are trademarks of Trimble Navigation limited.

All other trademarks are the property of their respective owners.

This product is covered by the following patents: 5,928,306; 6,144,335; and 6,377,891.

### **Release Notice**

This is the November 2007 release (Revision A) of the *Trimble GPS Analyst Extension Update for ArcPad 7.1 Software Support Release Notes*, part number 52652-04. It applies to version 2.10 of the Trimble GPS Analyst extension for ESRI ArcGIS software.

---

## Introduction

These release notes provide important information about the software update to version 2.10 of the Trimble® GPS Analyst™ extension for ESRI ArcGIS software. This software update provides support for ArcPad 7.1 software.

**Note** – *To use the ArcPad 7.1 software support, you must have ArcGIS Desktop software version 9.2 installed.*

These release notes explain how to update your copy of the Trimble GPS Analyst extension, and information about enhancements and changes provided as part of the update.

For general information about version 2.10 of the Trimble GPS Analyst extension, please refer to the *Trimble GPS Analyst Extension Release Notes*.

## Enhancements provided in the update

This update to the Trimble GPS Analyst extension provides the following enhancements:

- Support for checking out data as an AXF file for editing using ArcPad software version 7.1.
- Support for checking in AXF files from ArcPad software version 7.1.

For more information, see [Working with AXF files and the Trimble GPS Analyst extension, page 5](#).

---

## Issues resolved by this update

The following issues are resolved by installing this update:

- Incorrect handling of multiple GPSCorrect SSF files

Previously, the GPS Analyst extension was not able to use data from more than one GPSCorrect SSF file.

Users of version 1.10 and later of the Trimble GPSCorrect extension for ESRI ArcPad software who collect a data file over seven days in length are able to save the file and then start a new GPSCorrect SSF file.

The extension now checks whether more than one GPSCorrect SSF file is present in the same folder as the shapefiles or AXF files and automatically processes all of the files during check in and differential correction.

## Installing the update

To download and install the update from the Trimble website:

1. Start the Trimble GPS Analyst Updater by doing one of the following:
  - From the *Trimble GPS Analyst* drop-down menu in ArcMap, select *Check for new updates now*.
  - From the Windows *Start* menu, select *All Programs / Trimble / GPS Analyst / GPS Analyst Updater*

The *Welcome* dialog appears.

2. Exit all ArcGIS programs and then click **Next** in the *Welcome* dialog.
3. Select the *Trimble website* option and then click **Next**.

The *Choose the updates to download and install* dialog appears.
4. Select the *Update for ArcPad 7.1 support* update.

---

**Note** – You must have Administrator rights to download and install GPS Analyst updates. If you are not logged in under a user name with Administrator rights, the Next button is unavailable. If this button is unavailable, click Cancel once you have viewed information about the updates and decided what needs to be installed. To install the files, contact your administrator.

5. Click **Next**. The *Downloading and installing updates* dialog appears.

The Updater utility starts downloading the files from the Trimble website to the Updates folder in the GPS Analyst program folder (by default, this is C:\Program Files\Trimble\GPS Analyst\Updates). The files are downloaded first and then installed.

6. The *Updates completed* dialog appears, listing the files that were installed. If your computer must be restarted, select whether you want to restart the computer now or later.
7. Click **Finish** to exit and complete the installation of the updates.

## Working with AXF files and the Trimble GPS Analyst extension

### Before you begin

Before you can use the Trimble GPS Analyst extension to check in AXF files or check out data from ArcMap as AXF files, you must:

1. Install the ArcPad Data Manager extension for ESRI ArcGIS software.

To do this, install ArcPad 7.1 onto the computer where the ArcGIS Desktop software is installed. The ArcPad Data Manager extension for the ArcGIS Desktop software is automatically

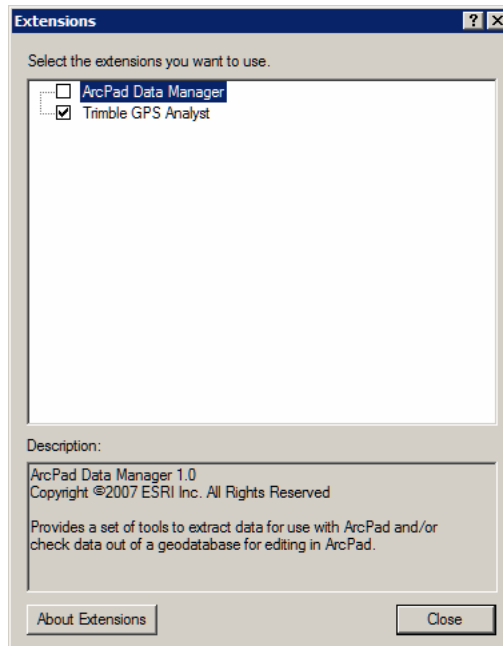
---

installed as part of the ArcPad software installation process. For more information, refer to the documentation provided with the ArcPad software.

2. Enable the ArcPad Data Manager extension in ArcMap:
  - a. From the Windows *Start* menu, select *All Programs / ArcGIS / ArcMap*.

ArcMap opens, displaying a dialog asking whether you want to want to start using ArcMap with a new map, a template, or an existing map.

- b. Select *A new empty map*.
  - c. Select *Tools / Extensions*. The *Extensions* dialog appears:

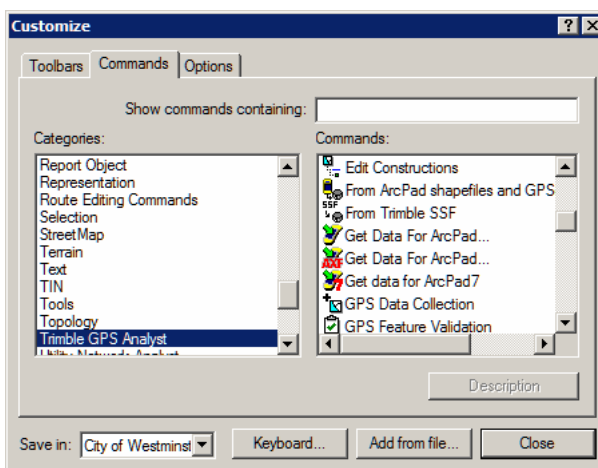




- d. Select the *ArcPad Data Manager* check box and then close the dialog.

---

The ArcPad Data Manager extension is now enabled in ArcMap.

- e. Close ArcMap to allow your changes to take effect.
3. Add the GPS Analyst tools for working with AXF files to the Trimble GPS Analyst extension toolbar:
- a. In ArcMap, right-click the *Trimble GPS Analyst* drop-down menu and then select *Customize*. The *Customize* dialog appears:



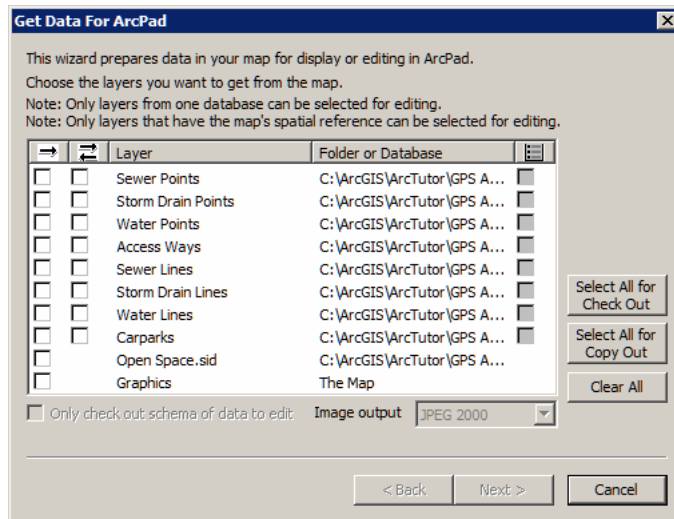
- b. Select the *Commands* tab.
- c. In the left pane, select *Trimble GPS Analyst*.
- d. In the right pane, select the  *Get Data for ArcPad* command.
- e. Drag the command to the location on the Trimble GPS Analyst toolbar where you want to add it and then drop it onto the toolbar.
- f. Return to the right pane of the  *Customize* dialog and then select the *Check In ArcPad AXF File and GPSCorrect SSF* command.

- g. Drag the command to the location on the Trimble GPS Analyst toolbar where you want to add it and then drop it onto the toolbar.
- h. Click **Close** in the *Customize* dialog.

**Note** – The first time you use the GPS Analyst toolbar buttons for checking out or checking in AXF data, you may be prompted to add commands to your toolbox. Select yes to this dialog to add the relevant tools.

## Getting data for ArcPad 7.1

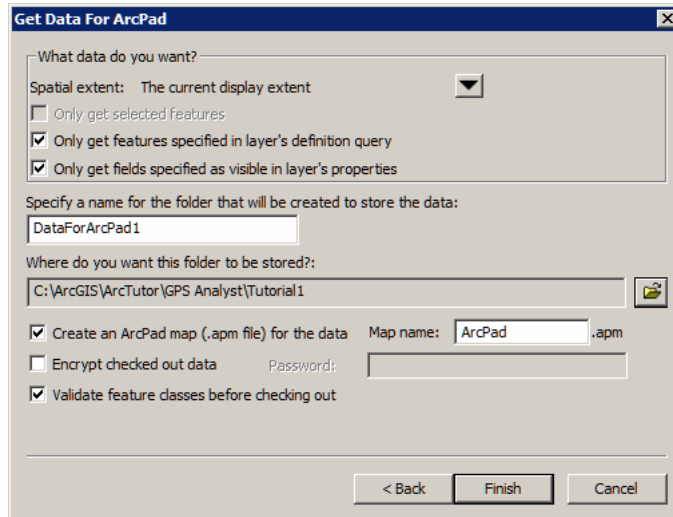
1. In ArcMap, open the map file that contains the layers you want to extract.
2. Click the Get Data for ArcPad button  on the Trimble GPS Analyst toolbar. The **Get Data for ArcPad** wizard appears.



3. In the *Copy out layers for viewing in ArcPad* column, select the layers you want to be able to view in ArcPad, or click the **Select All for Copy Out** button.

**Note** – If you “Copy out” a layer, any edits to that layer cannot be checked back into the geodatabase.


- 
- In the *Check out layers for editing in ArcPad* column, select the layers you want to be able to edit in ArcPad, or click the **Select All for Check Out** button.
  - Click **Next**.

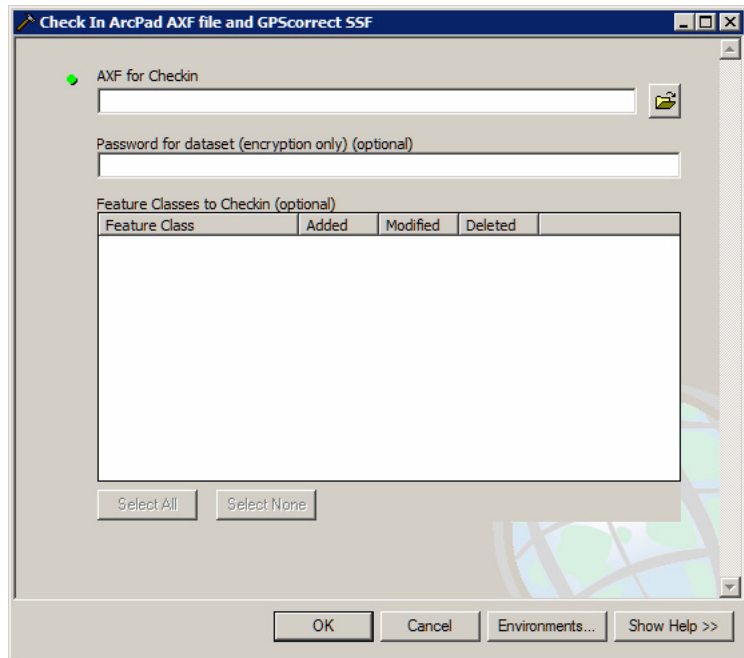



- Define your extraction criteria. For more information, search for the topic **Getting data for ArcPad** in the *ArcGIS Desktop Help*.
- Click **Finish** to extract the data. An AXF file is created for the feature classes you want to edit in ArcPad. A Shapefile is created for the feature classes that you only want to view in ArcPad.  
  
A summary dialog appears that details a report of the completed extraction.
- Click **OK** to close the dialog.

---

## Checking in data from ArcPad 7.1 and the GPSCorrect extension

1. In ArcMap, open the map file that contains the layers you want to check data into.
2. From the *Trimble GPS Analyst* drop-down menu, select *Start GPS Editing*.
3. Click the Check in ArcPad AXF and GPSCorrect SSF button  on the Trimble GPS Analyst toolbar. The **Check in ArcPad AXF file and GPSCorrect SSF** wizard appears.



4. To select the AXF file, click the Browse button  beside the *AXF for Checkin* field.
5. If you encrypted the data when you checked it out, enter the password you set for the file.

- 
6. In the *Feature Classes to Checkin* list, select the feature classes you want to check in.
  7. Click **OK**. The updated field data is now checked in. The corresponding SSF file is imported into the geodatabase as an imported GPS session, and the GPS data is linked to the GIS features.

A summary dialog appears that details a report of the completed extraction.

8. Click **OK** to close the dialog.

