



30 November 2011

GPS Pathfinder Office Software: Esri File Geodatabase Support in the Import and Export Utilities

An update to the Trimble® GPS Pathfinder® Office version 5.20 has been released featuring new Esri File Geodatabase formats in the Export and Import utilities.

Description

The Esri File Geodatabase format has been added to the Export and Import utilities in the GPS Pathfinder Office software.

A File Geodatabase is a collection of various types of GIS datasets held in a file system folder. It provides a widely available, simple, and scalable geodatabase solution that works across operating systems, scales up to handle very large datasets, and uses an efficient data structure that is optimized for performance and storage.

Implementation of the File Geodatabase interface in the GPS Pathfinder Office software is an important product enhancement that makes it easier for Esri product users to take advantage of the functionality provided in the GPS Pathfinder Office and the Trimble TerraSync™ software.

Due to the differences between data models used in the GPS Pathfinder Office software and Esri software, and to the specific implementation of the File Geodatabase API, File Geodatabase export and import have certain limitations; these are described in the *GPS Pathfinder Office Help*.

To install the update, use the GPS Pathfinder Office Updater Utility.

Known issues:

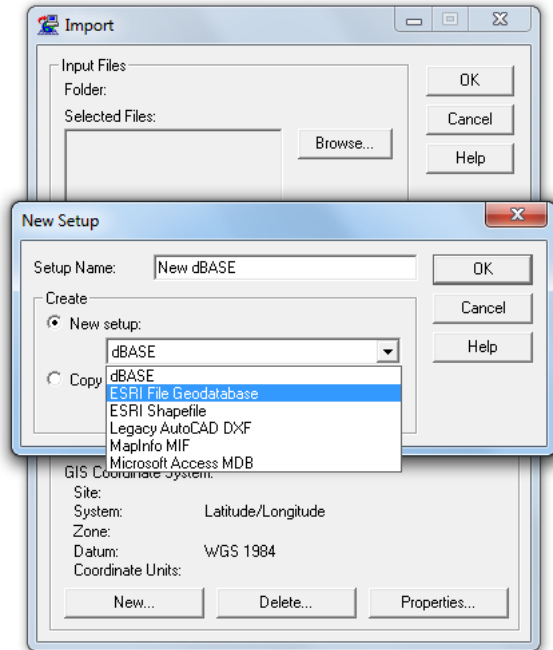
- When you install the File Geodatabase support update you may not see the *Sample ESRI File Geodatabase Setup* option in the Export/Import drop down lists. Create a new Import/Export setup and select *ESRI File Geodatabase* from that drop down list as shown in the example below:

This document is for informational purposes only and is not a legally binding agreement or offer. Trimble makes no warranties and assumes no obligations or liabilities hereunder.

Trimble Navigation Limited, 10355 Westmoor Drive, Suite #100, Westminster, CO 80021, USA

© 2011, Trimble Navigation Limited. All rights reserved. Trimble, the Globe & Triangle logo, and GPS Pathfinder are trademarks of Trimble Navigation Limited, registered in the United States Patent and Trademark Office and in other countries. TerraSync is a trademark of Trimble Navigation Limited. All other trademarks are the property of their respective owners.





- The current version of the Export and Import Utilities with File Geodatabase support is only available in English. If you have previously installed a language pack, installing this update will cause the Export and Import Utilities to revert to English. This is not a bug. All other functionality of the GPS Pathfinder Office software continues to be available in the language previously chosen by the user. This limitation will be removed in the next full release of the GPS Pathfinder Office software.
- Uninstalling and reinstalling the GPS Pathfinder Office software will result in removal of the ESRI File Geodatabase setup option. Use the Updater utility to reinstate it.
- If the name of an SSF file (excluding the file extension) is longer than 16 characters, and exported attributes include *Data File Name*, the export may fail. Suggested workarounds are:
 - rename the input file so that it has no more than 16 characters in the file name
 - do not export the *Data File name* auto-generated attribute.
- If several SSF files are exported and each file name (including the file extension) includes more than one “.” character, on some occasions exported file geodatabases may be overwritten. A suggested workaround is to rename the input files so that each file name has only one “.” character.